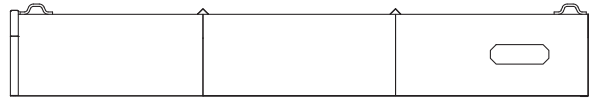


# Arbor Body One Piece Roof

## ASSEMBLY & INSTALLATION

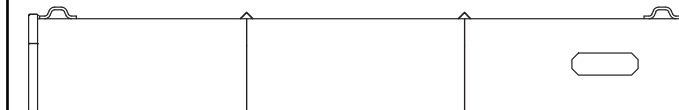


PRODUCT OF **SWITCH-N-GO**  
Subsidiary of Federal Signal Corporation

### PARTS INCLUDED

QTY	PART NUMBER	DESCRIPTION	NOTE
1	6802411	One Piece Roof (11')	1 roof
	6802412	One Piece Roof (12')	
	6802414	One Piece Roof (14')	

#### ONE PIECE ROOF (1)



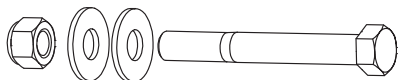
11' ROOF | 6802411  
 12' ROOF | 6802412  
 14' ROOF | 6802414

### HARDWARE REQUIRED

QTY	PART NUMBER	DESCRIPTION	NOTE
20	9480044	Washer	2 for each bolt
10	9430009	Nut	1 for each bolt
10	9010240	Bolt (for MDRB)	10 bolts for MDRB or Dumpster Body
	9010230	Bolt (for Dumpster Body)	

#### HARDWARE REQUIRED FOR INSTALLATION | TUBE TOP RAIL BODIES

WASHER (20) | 9480044  
 NUT (10) | 9430009  
 BOLT (10) | 9010240



#### HARDWARE REQUIRED FOR INSTALLATION | FORMED TOP RAIL BODIES

WASHER (20) | 9480044  
 NUT (10) | 9430009  
 BOLT (10) | 9010230



### TOOLS REQUIRED

- Drill with 9/16" bit
- Work gloves
- Hard hat
- Safety glasses

### TIPS/NOTES

Open door(s) of the body you're installing the roof onto for easiest access.

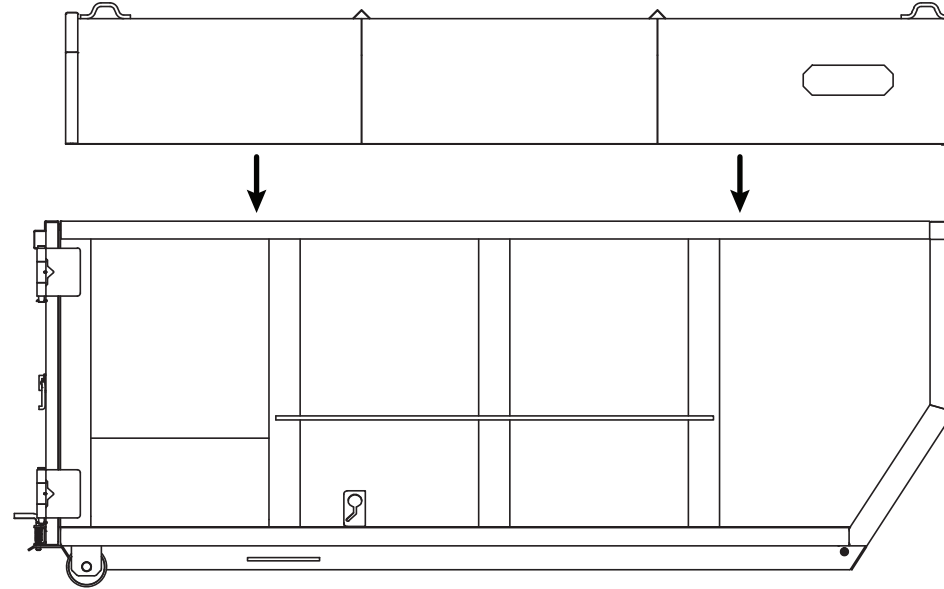
Depending on the body you are installing this on, you may need to do minor modifications to the tabs that help secure the roof panels in place.

#### Approximate Weights:

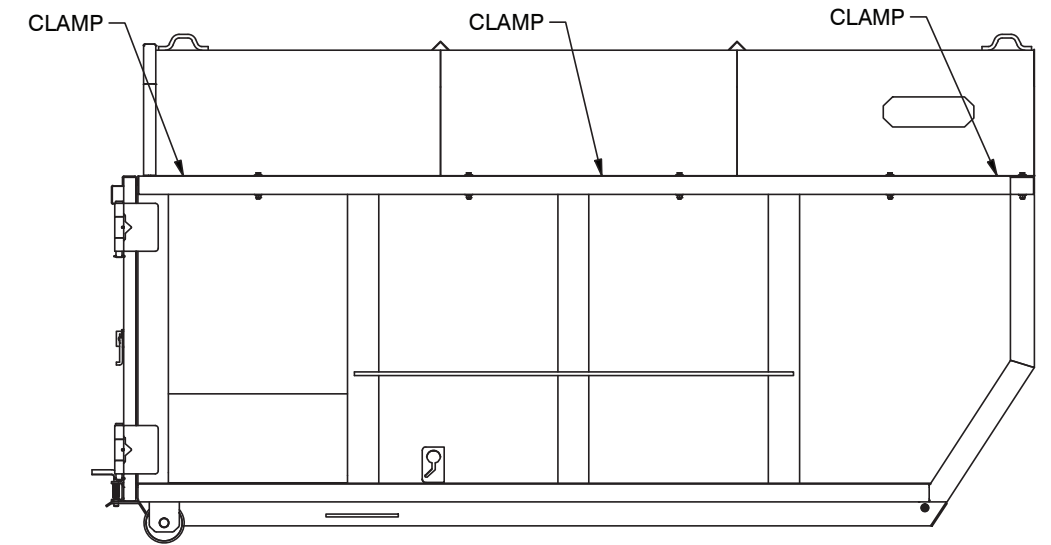
- 11' one piece roof - 665 lbs
- 12' one piece roof - 710 lbs
- 14' one piece roof - 820 lbs

### ASSEMBLY & INSTALLATION

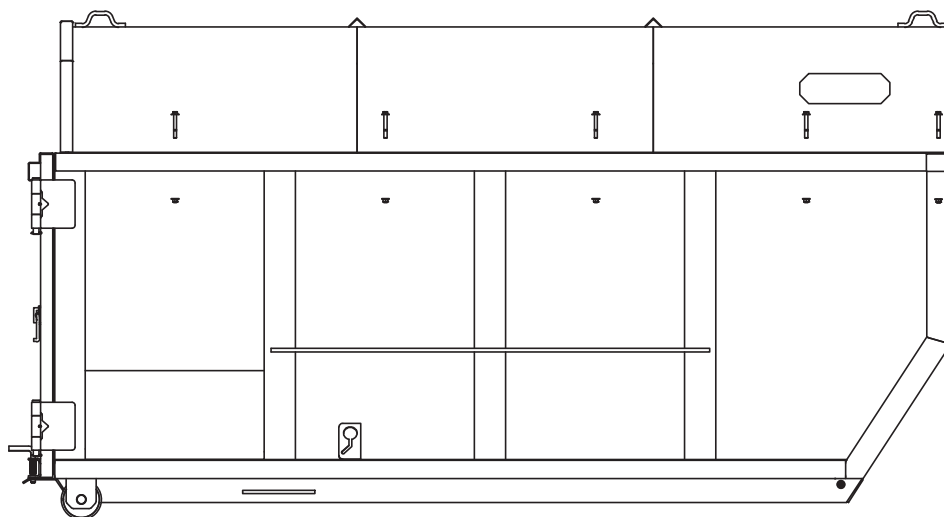
**1** Mount your One Piece Roof onto your Body. Be sure to align roof flush with front of body.



**2** Clamp together your One Piece Roof and your Body on both the driver and passenger sides - this is essential for step 3.

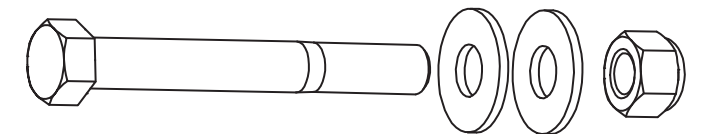


**3** On the driver side, after positioning and clamping, locate 5 equally spaced locations and drill through both One Piece Roof and Body at the same time to ensure they match up. Repeat this on the opposite side of the box and body.

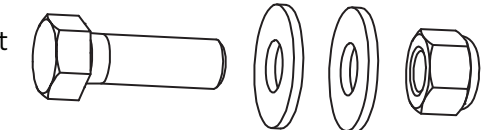


**4** Use required (not provided) hardware to mount roof to body at each of the 10 locations drilled in step 3.

1/2"-13 x 4" Long Bolt for Tube Top Rail Bodies



1/2"-13 x 1.5" Long Bolt for Formed Top Rail bodies



### ESTIMATED ASSEMBLY TIME

**ESTIMATED TIME:** 1-2 people, 2-3 hours  
 MUST USE LIFTING EQUIPMENT DUE TO WEIGHT