

# GEN 1 WIRELESS CONTROLLER OPERATION & INSTALLATION

PRODUCT OF **SWITCH-N-GO**  
Manufactured in the United States of America

**IP66  
RATED**

## PARTS INCLUDED

- (1) Transmitter, macro, 4 button #3790036
- (1) Receiver, 4 output, programmable #3790039
- (1) USB charger for remote with wall adapter #3790037
- (1) Wrist strap for remote #3790038
- (1) Mounting hardware kit #4850513

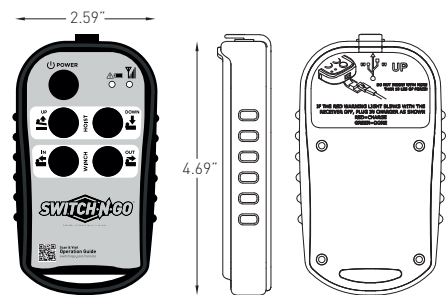
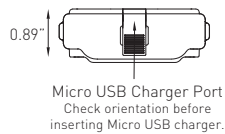
## TOOLS REQUIRED

- 11/64" drill bit
- Phillips-head screw driver
- 5/16" socket
- Drill
- Socket wrench

## TRANSMITTER

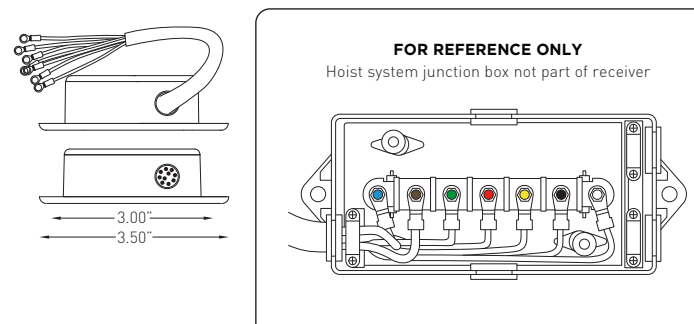
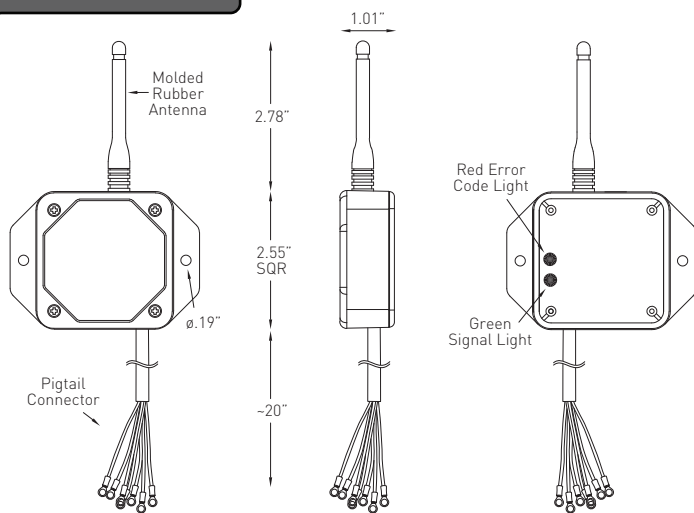
#3790036

**APPROVED CHARGERS ONLY**  
**Micro Wall Charger** - 10-240VAC (B20172A)  
**Micro Car Charger** - 12-24VDC (B20173A)



## RECEIVER

#3790039



## SPECIFICATIONS

- RF: 902-928MHz FHSS 10mW
- Temp: Receiver: -40 to +85°C, Transmitter: -20 to 60°C
- Output Rating: 5A each (sourcing) 20A system maximum
- Encapsulated electronics inside receiver
- Power: 3.7V LiPo battery
- Battery Life: 30-40 hours continuous

## INSTALLATION

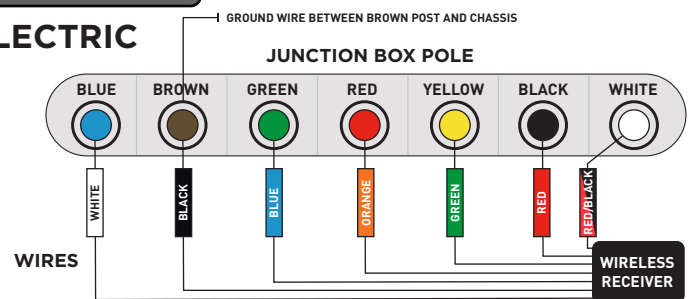
1. Place the receiver in the designated area on the hoist system pump plate.
2. Drilling an 11/64" hole 3" from the existing hole may be necessary. Use the mounting hardware provided to secure the receiver to the pump plate.
3. Unscrew and remove the wiring junction box lid.
4. Remove nuts from each post within the junction box and attach wire ring terminals as indicated in the Electrical Wire Color Chart. Resecure the nuts when finished.
5. Test system operation using the wireless remote. Then reattach the junction box lid.
6. Route excess wiring away from moving or pinching areas and secure with zip ties.

## ELECTRICAL WIRE COLORS

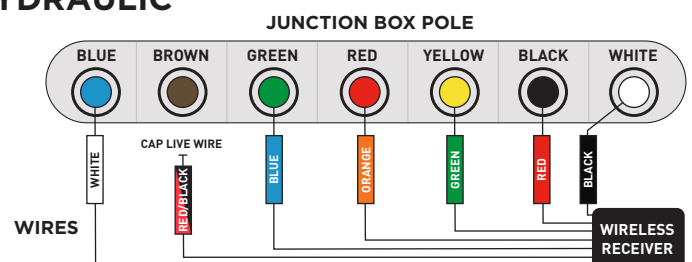
WIRE COLOR	FUNCTION	JUNCTION BOX POST COLORS	
		ELECTRIC	HYDRAULIC
RED	POWER (9-30 VDC)	BLACK	
BLACK	GROUND	BROWN	WHITE
WHITE	WINCH IN	BLUE	
GREEN	WINCH OUT	YELLOW	
BLUE	HOIST UP	GREEN	
ORANGE	HOIST DOWN	RED	
RED/BLACK	PUMP	WHITE	

## SYSTEMS

### ELECTRIC



### HYDRAULIC



# GEN 1 WIRELESS CONTROLLER OPERATION & INSTALLATION

PRODUCT OF 

IP66  
RATED

## OPERATION

- Press and hold the POWER button for at least 2 seconds and release.
  - The transmitter is designed with a power saving feature which turns the transmitter off after 10 minutes if no buttons are pressed.
- There are red and green LEDs both on the keypad of the transmitter and inside the receiver case. The green LED will blink 2 times per second when the transmitter and receiver are communicating. It will blink 1 time per second if there is no communication (i.e. - no power to the receiver).
- The transmitter's red LED blinks 2 time per second if the batteries are low. The transmitter needs to be charged.

- ❶ *The red LED will stay on while charging and when the charge is completed the green LED will stay on.*
- ❶ *It will take longer to charge if the transmitter is on during charging.*

## CLONING TRANSMITTERS

Occasionally, it is necessary to have more than one transmitter work with a single receiver. This is accomplished by a process called cloning. Cloning allows an additional transmitter (B) to have the same ID code as the original transmitter (A).

### CLONING A TRANSMITTER:

1. Make sure both transmitters and the power are off.
2. On Transmitter A, press and hold POWER buttons for more than 10 seconds until both LEDs start blinking then release POWER button.
3. On Transmitter B, press and hold power buttons 1, 2, and POWER button simultaneously until both LEDs start toggling then release buttons.
4. Wait for ~1 seconds until both LEDs stop blinking on both units.
5. Cloning complete.

#### WARNING

Only one transmitter can be used at a time, they cannot be used simultaneously. Use with caution!

If the transmitter has been cloned but is no longer needed, the ID code of one of the transmitters should be changed to unclone the transmitters.

### UNCLONING A TRANSMITTER:

1. Make sure the receiver and transmitter are OFF.
2. Press and hold buttons 2, 3, 8, and POWER simultaneously until both LEDs start toggling then release buttons.
3. Press any button again to select a new ID.
4. Uncloning complete.
5. Follow the SYNCHRONIZING TRANSMITTER AND RECEIVER procedure above to link the uncloned transmitter to a new receiver.

This device complies with Part 15 of the FCC Rules. Operation is subject to the following two conditions: (1) this device may not cause harmful interference, and (2) this device must accept any interference received, including interference that may cause undesired operation. Changes or modifications not expressly approved by the manufacturer will void the user's authority to operate the equipment..

## SYNCHRONIZING TRANSMITTER AND RECEIVER

There are over 64,000 different ID codes available for each transmitter and receiver pair. Each transmitter and receiver pair is synchronized together at the factory. If a new transmitter is needed, you must synchronize it with your receiver.

### SYNCHRONIZING A TRANSMITTER AND RECEIVER:

1. Turn both transmitter and receiver off.
2. With the transmitter off, press and hold the POWER button for more than 10 seconds. LEDs start blinking.
3. Turn on the receiver. On older models, place a jumper across the TEACH ID jumper inside the receiver. The green LED will go from blinking to steady. Remove the jumper and store it on one pin.
4. Teach complete.



The product is marked with this symbol. It means that used electrical and electronic products should not be mixed with general household waste. There is a separate collection systems for these products. In the EC - Please contact the local National Distribution (see [www.lodar.com](http://www.lodar.com) for this information) who will inform the user about the take-back of the product. A charge may be present for the costs arising from the take-back and recycling. Small products might be taken back by a local collection facility. Outside the EC - If this product needs to be discarded, please contact the local authorities and ask for the correct method of disposal.